



Age-Friendly Health Systems: Evidence-Based Care for All Older Adults

Age-Friendly System-Wide Spread Collaborative
Information Session
January 10, 2024

Age-Friendly Health Systems is an initiative of The John A. Hartford Foundation and the Institute for Healthcare Improvement (IHI) in partnership with the American Hospital Association (AHA) and the Catholic Health Association of the United States (CHA).

IHI.org/AgeFriendly

Agenda

1:00 pm ET	Welcome and introductions
1:05 pm ET	Age Friendly Health Systems Movement Update
1:15 pm ET	Age-Friendly System-Wide Spread Collaborative
1:25 pm ET	Theory of Change and Measurement
1:35 pm ET	Staying involved in the Movement
1:40 pm ET	Q & A

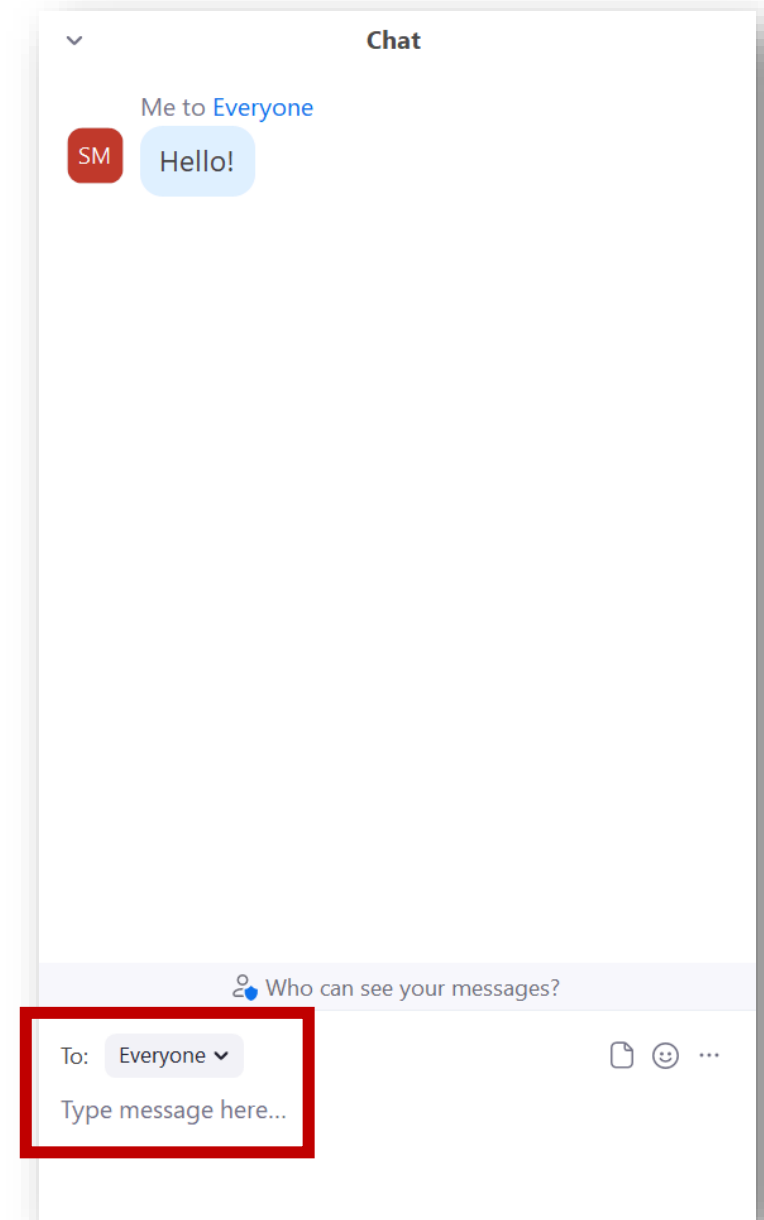
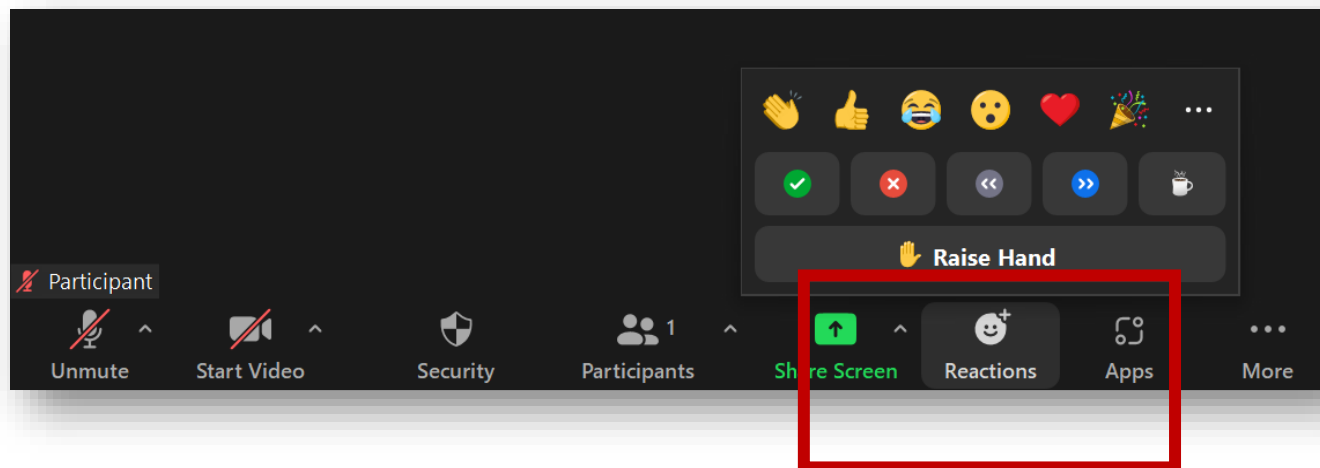
Participating in Today's Discussion

Using the Chat

- Introduce yourself
- Ask questions
- Select **"Everyone"** from the dropdown menu before sending in your questions and comments

Using the Reactions Button

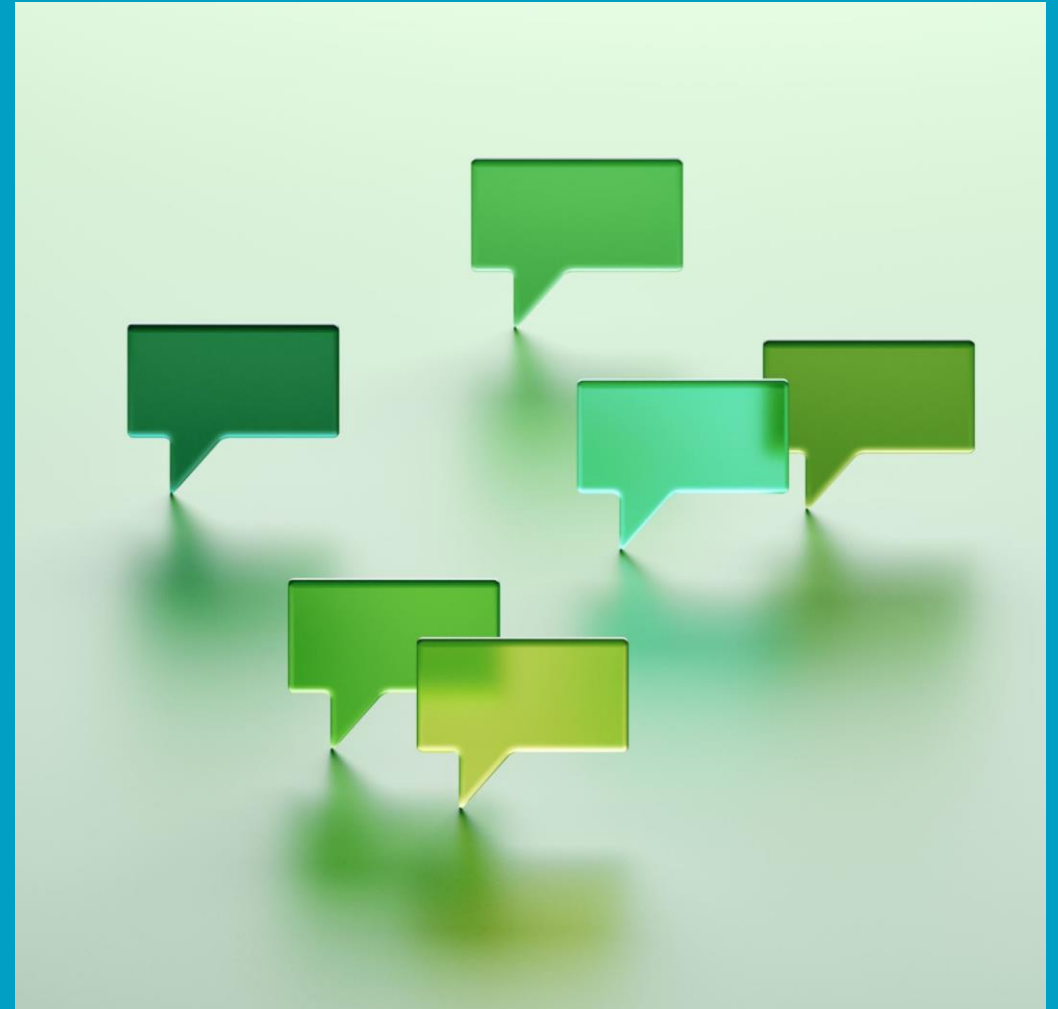
- Click on "Reactions" at the bottom of the screen
- Raise your hand if you would like to speak up



Welcome and Introductions

Please chat in:

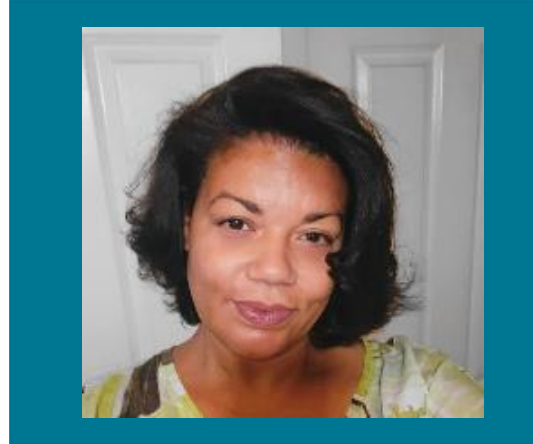
- *Your name and role*
- *Organization name*
- *State*



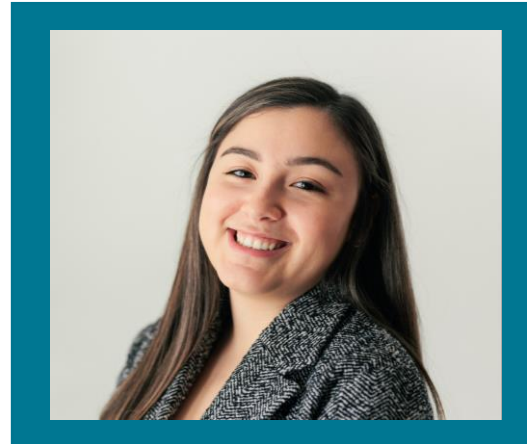
System-wide Spread Team



Dawn Johnson, MSN, RN
Equity Faculty Expert



Laurita Kaigler-Crawle, MS
Project Director



Nicole Korp,
Associate Project Manager



Kedar Mate, MD
President and CEO



Amanda Meier,
Project Manager



Leslie Pelton, MPA
Vice President



KellyAnne Pepin, MPH
Senior Project Director



Christina Southey, MSc
Improvement Advisor

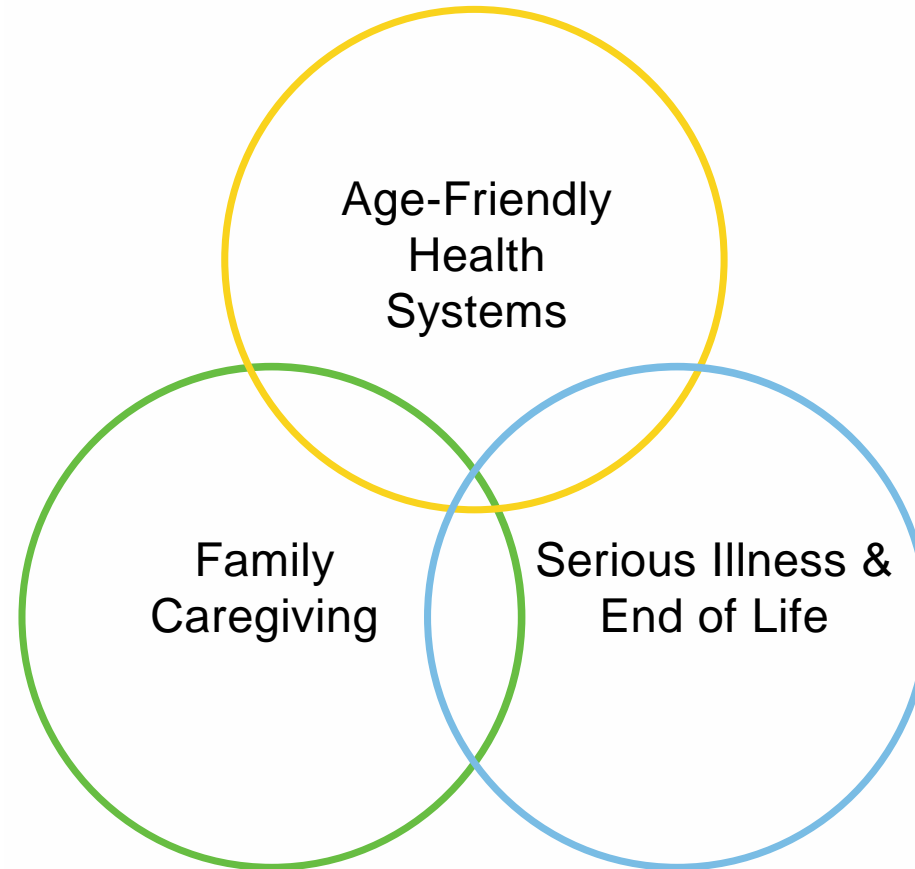
Mission



The
John A. Hartford
Foundation

DEDICATED TO IMPROVING THE CARE OF OLDER ADULTS

PRIORITY AREAS



DEDICATED TO IMPROVING THE CARE OF OLDER ADULTS

Our Mission

Build a movement so **all care** with older adults is **age-friendly care**:

- Guided by an essential set of evidence-based practices (4Ms);
- Causes no harms; and
- Is consistent with What Matters to the older adult and their family.



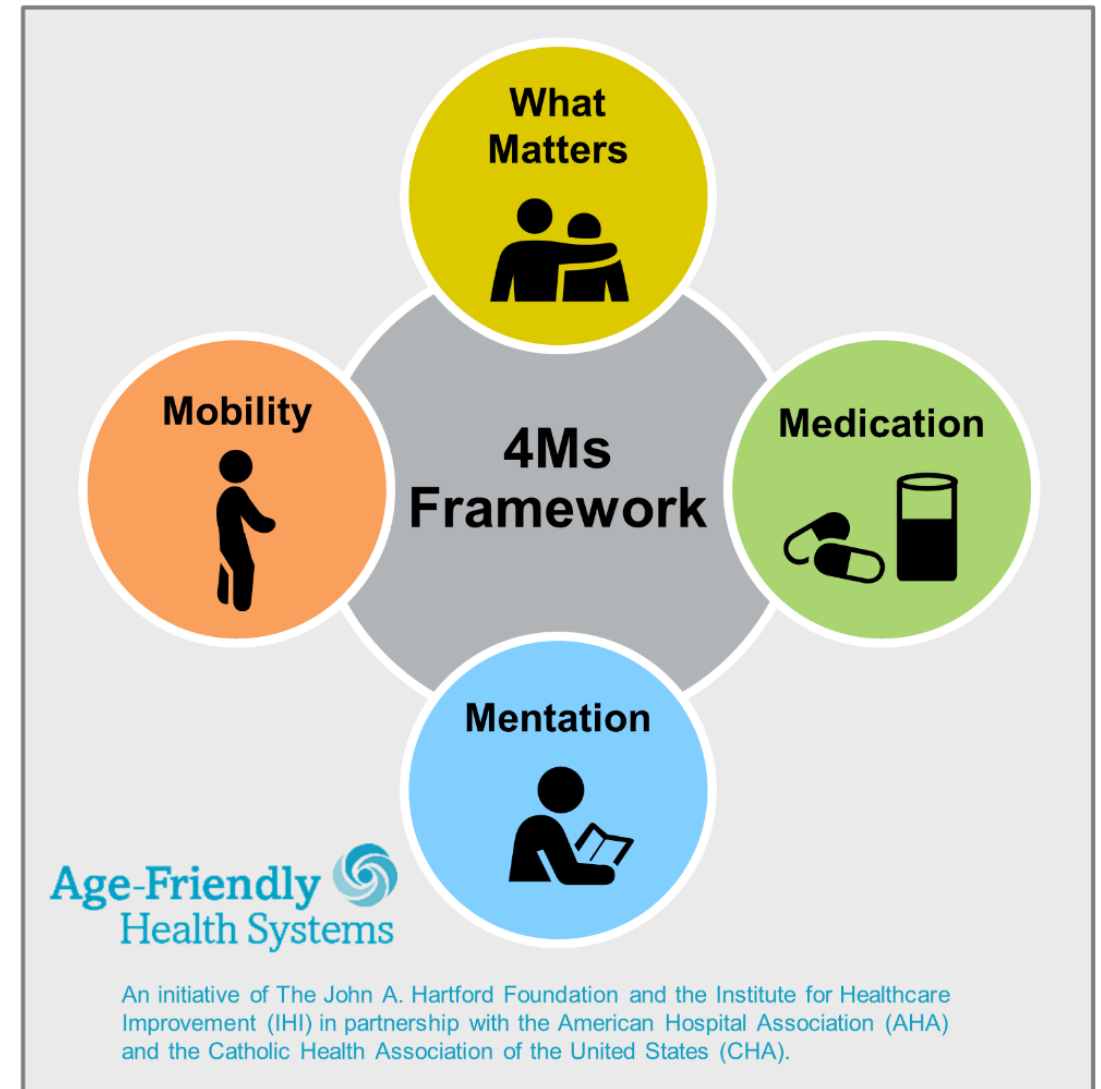
Why the 4Ms?

Represents core health issues for older adults

Builds on strong evidence base

Simplifies and reduces implementation and measurement burden on systems while increasing effect

Components are synergistic and reinforce one another



For related work, this graphic may be used in its entirety without requesting permission.
Graphic files and guidance at ihi.org/AgeFriendly

Two Levels of Recognition from IHI



3546

Hospitals, practices, convenient care clinics, and nursing homes have described how they are putting the 4Ms into practices



2033*

Hospitals, practices, convenient care clinics, and nursing homes have shared the count of older adults reached with 4Ms care for at least three months

**Age-Friendly Health System-Participants count is inclusive of hospitals and practices that went on to be recognized as Age-Friendly Health Systems-Committed to Care Excellence*

More than 2,900,000
older adults have been
reached with 4Ms care.

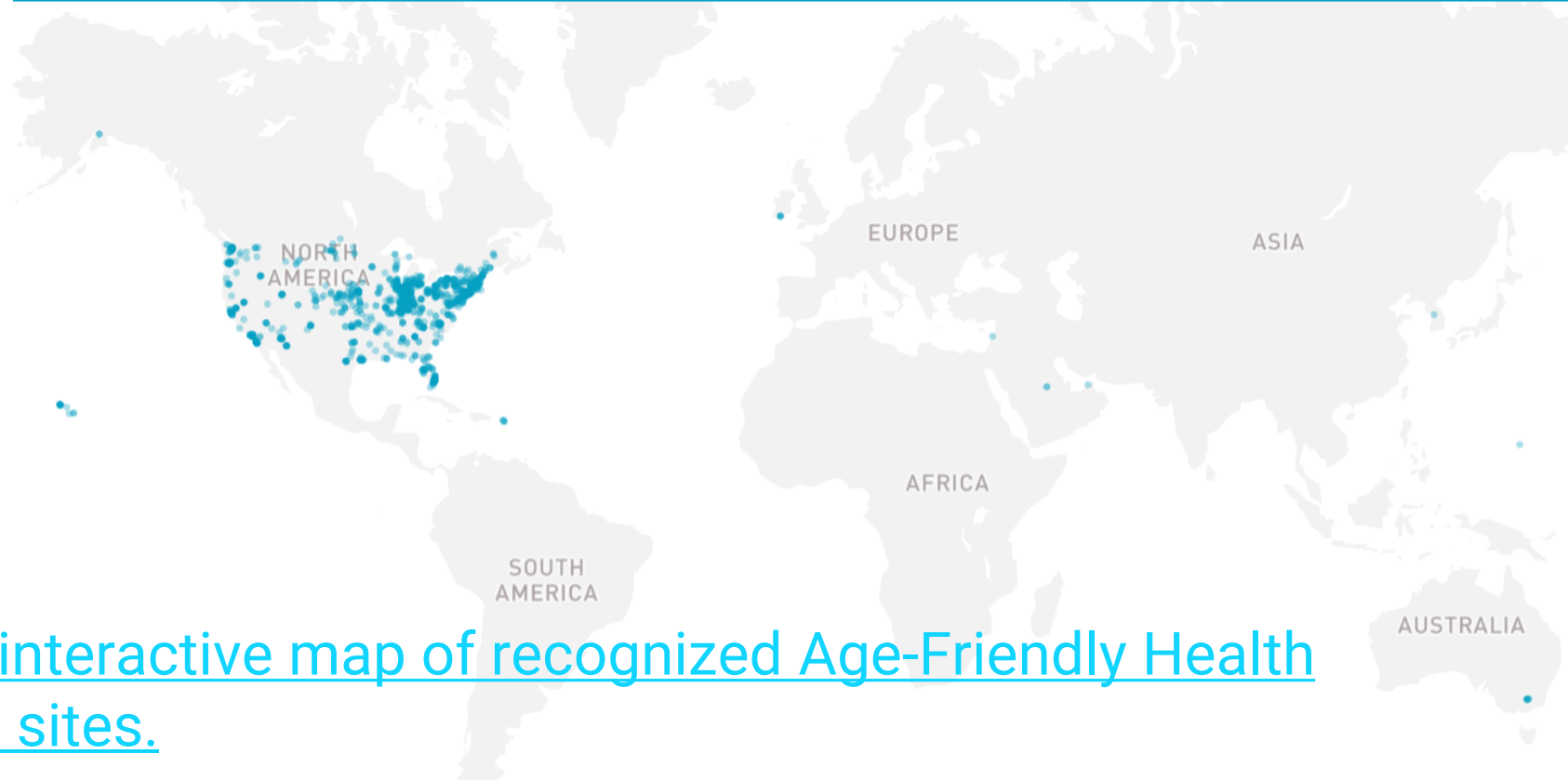
As of January 2024



Interactive Map of Recognized Age-Friendly Health Systems

Age-Friendly
Health Systems

Participant Sites



[View an interactive map of recognized Age-Friendly Health Systems sites.](#)

Age-Friendly
Health Systems

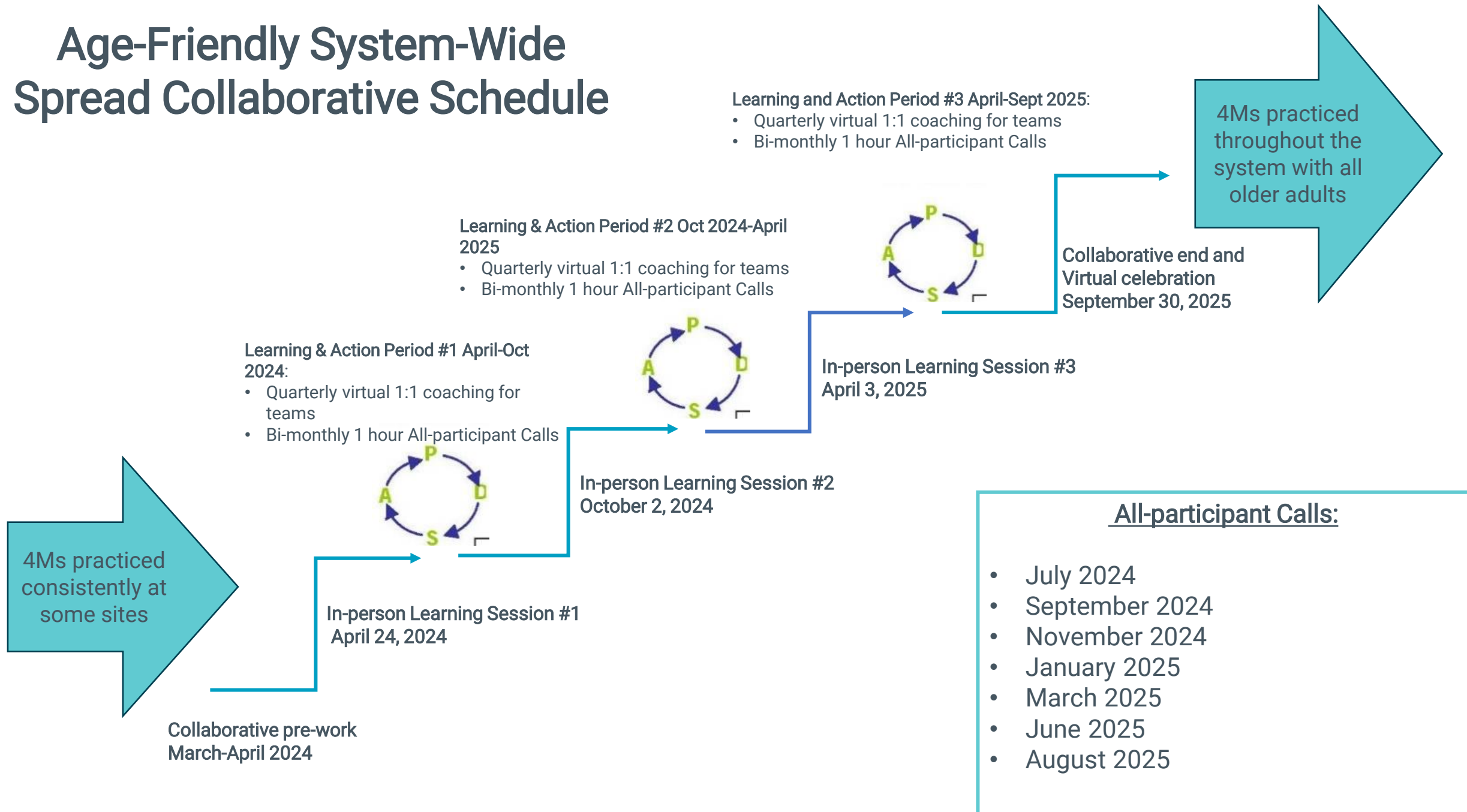


Scale up and Spread of Age-Friendly Care Across Entire Health Systems

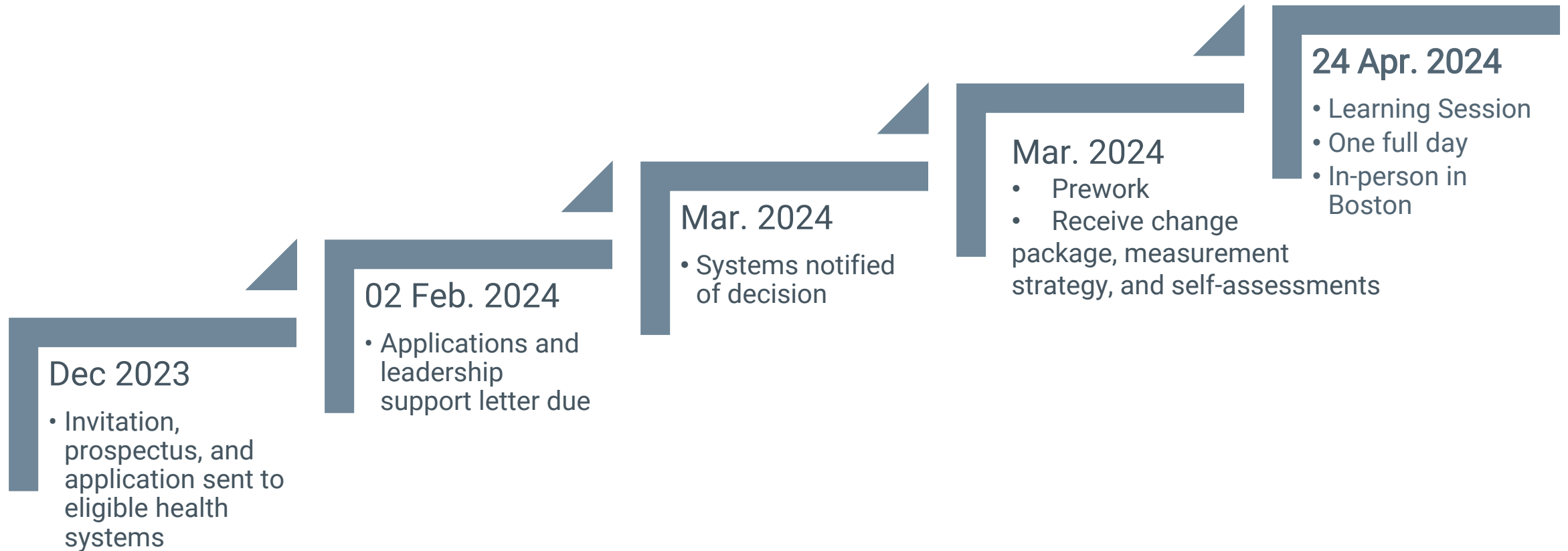
Collaborative Aim: Support health systems to scale up and spread the 4Ms care across sites and settings of care
to create Age-Friendly Health Systems

- 20 health systems will be selected to participate in the Collaborative
- 18 month Learning Collaborative begins April 2024
- Opportunities to accelerate 4Ms adoption, learn with expert faculty, and peers across the country

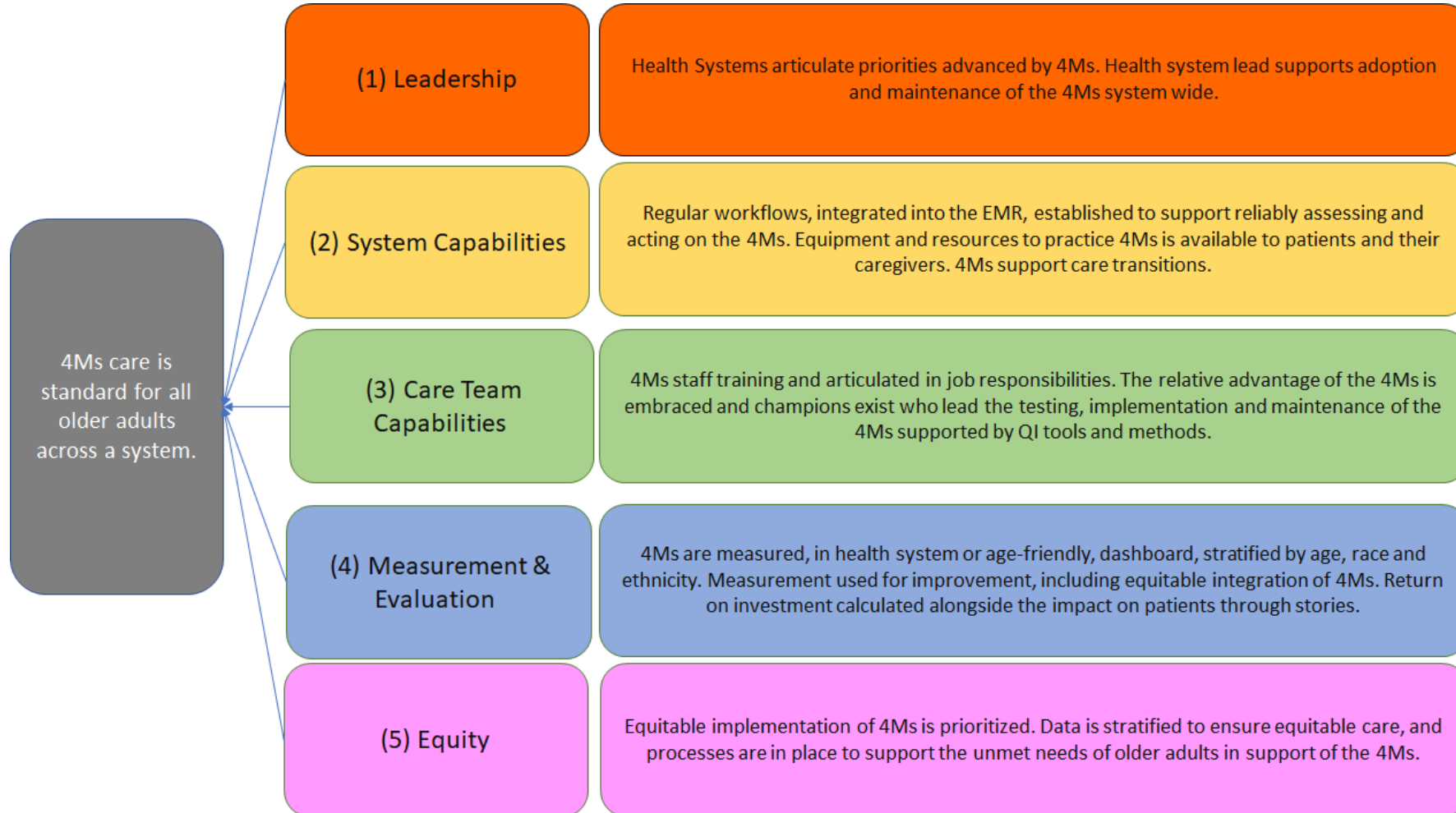
Age-Friendly System-Wide Spread Collaborative Schedule



Collaborative Selection Process and Timeline



Advancing equitable, system-wide 4Ms adoption



Source: Age-Friendly Health System site visits

Collaborative Measures and Data Sharing



Participating Health Systems to share aggregate data once/month for recognized sites (no record level data will be requested)



Measures will match those detailed in AFHS Guides for each setting and Measures Guide



Participating systems with existing dashboards will be able to utilize data already collected and reported



Systems asked to submit data stratified by REaL or strive to do so as soon as possible from the Collaborative start

Involvement

What you can gain:

- Accelerated, equitable, system-wide adoption of evidence-based care of older adults
- Return on Investment and business case articulated for 4Ms adoption
- Qualitative and quantitative data on outcome and process measures
- Build quality improvement capabilities
- Support and coaching with peers, improvement science advisors, and expert faculty

How you will contribute:

- Be recognized as pioneers of system-wide spread in the Age-Friendly Health Systems movement
- Share learnings as you test improvements, including data to accelerate your own and other participating health systems

On-Ramps to Join the Movement

System-Wide Spread Collaborative

Action Communities for teams to learn about and practice the 4Ms with the support of expert faculty and a community of peers. Action Communities are facilitated by IHI, AHA, and other movement partners.

DIY Pathway for teams to learn about and test the 4Ms on their own using Age-Friendly Health Systems resources.



ihi.org/AgeFriendly

Age-Friendly
Health Systems



Join IHI's 2024 Action Community!

- 7-month, virtual community
- Monthly webinars about the 4Ms and resources to support implementation
- Community of testers and learners
- Bright spot examples of organizations sharing how they implement the 4Ms
- Support your health organization's mission, vision, and values



There is no fee to participate

Visit ihi.org/agefriendly

Age-Friendly Health Systems Participant Community Webinars

Who? Age-Friendly Health System Participants and Committed Care Excellence Organizations

What? Ongoing access to advanced age-friendly topic webinars related to sustaining and spreading 4Ms care

When? Launching 2024

Why? Deepen the practice of the 4Ms within your health system, network with other Age-Friendly Health Systems champions

How? Invites to webinars will be sent to all recognized Age-Friendly Health System key-contacts

Which option best suits your system?



We are just starting out:
Join an upcoming action community



We have one or more Participant site: Engage additional sites of care through Action Communities and create a plan to deepen and spread the 4Ms by joining Participant community webinars.



We have two or more CCE recognized sites and are committed to system-wide spread: Consider applying for the Collaborative

Questions?